



BT Diverse 7100 Plus User Guide

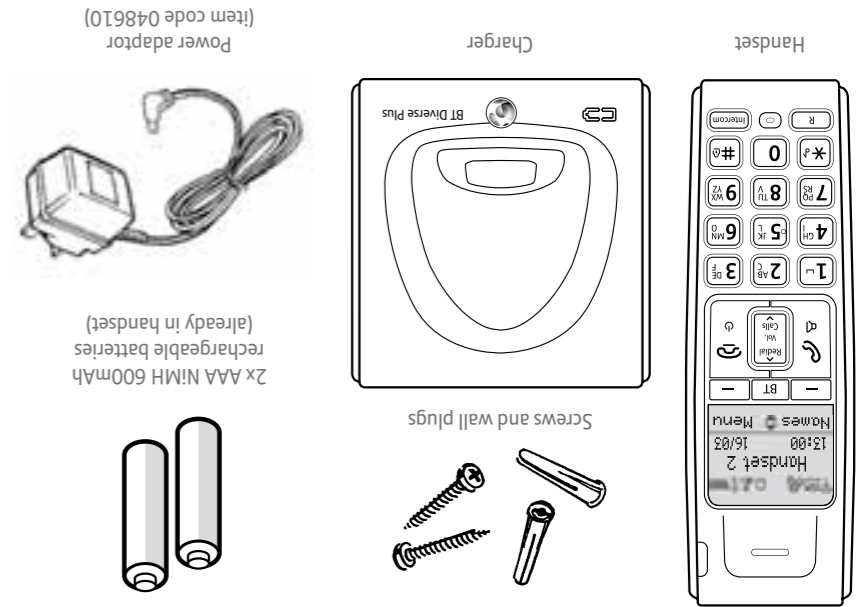


- 1 Plug in and charge
- 2 Register
- 3 Go!

Setting up is easy. Just follow the simple steps in this guide. If you need further assistance, please visit our website www.bt.com/producthelp to view our advanced user guide or call our helpdesk on 0800 218 2182*

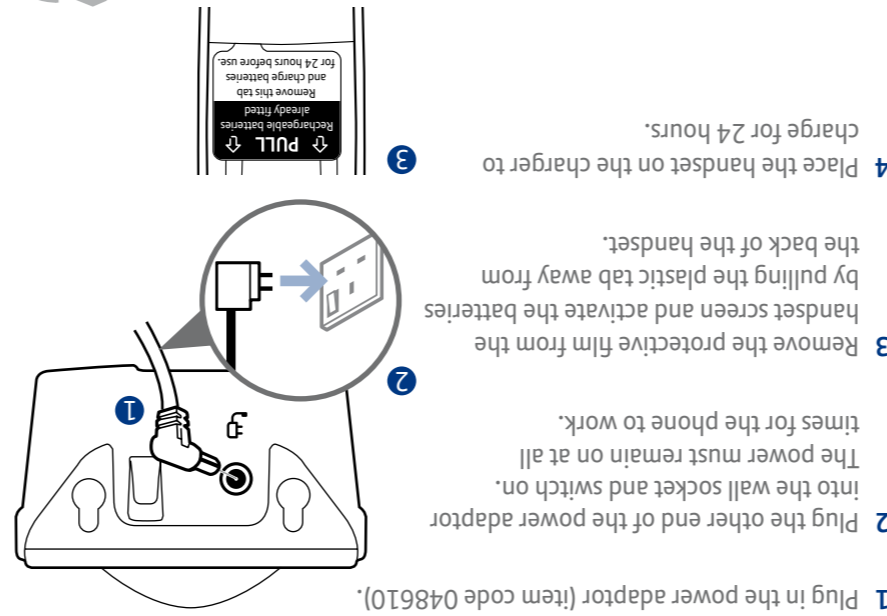
* Calls made from within the UK mainland network are free. Mobile and International call costs may vary.

Check box contents



Important: Only use the power adaptor and rechargeable batteries supplied in this box or this product may not work. Any replacement rechargeable batteries must be of the same type and are available from the BT Diverse Plus Helpline. BT accepts no responsibility for damage caused to your BT Diverse 7100 Plus by using any other type of batteries.

1 Plug in and charge



- 1 Plug in the power adaptor (item code 048610).
- 2 Plug the other end of the power adaptor into the wall socket and switch on. The power must remain on at all times for the phone to work.
- 3 Remove the protective film from the handset screen and activate the batteries by pulling the plastic tab away from the back of the handset.
- 4 Place the handset on the charger to charge for 24 hours.

Important: Charge the handset batteries for 24 hours or your phone may not work.

If you ever need to remove the batteries, simply slide open the battery compartment cover and using the finger grip the batteries and pull them out.

2 Register

- 1 The display will show **Please Re-register** and once the batteries have charged for 24 hours and you are close to the base station, press the left soft key (F3). The display will show **Press and Hold Base Find Key**. The **Find** button is located on the Diverse base underneath where the handset sits. Press and hold the button on the base for approximately 8 seconds until the base beeps, then release. Immediately press **OK** on the handset to confirm. The base will go into registration mode for 90 seconds and will beep when registration is successful. The handset will automatically be assigned the next available handset number and registration is now complete.
- 2 If registration was not successful first time, repeat the process again in case the base registration period ran out of time.
- 3 You can register up to 5 handsets to a BT Diverse Plus base. If there are already 5 registered, the registration will fail. You must de-register a handset before you can register a new one. See the full BT Diverse 7110 Plus user guide online at www.bt.com/producthelp for instructions.
- 4 If you want to register the handset to another DECT GAP compatible base station that is not in the BT Diverse 7000 Plus range you will need to refer to the user guide for that base for registration instructions.

Easy registration to a BT Diverse 7000 Plus base

Your BT Diverse 7100 Plus is now ready for use. Please turn over



Working together, supporting energy saving products

BT & British Gas have joined forces to help our customers find new ways to save energy around the home, so we can all do our bit for the environment & save money too!

BT is a sustainability leader

To find out how we're making our products greener visit

bt.com/betterworld/products

Offices worldwide

The services described in this publication are subject to availability and may be modified from time to time. Services and equipment are supplied subject to British Telecommunications plc's respective standard conditions of contract. Nothing in this publication forms any part of a contract.

© British Telecommunications plc 2011. Registered Office: 81 Newgate Street, London EC1A 7AJ. Registered in England No. 1800000.

Designed and produced by The Art & Design Partnership Ltd.

Printed in China / Issue 1 / ADP01-11



Product disposal instructions

The symbol shown here and on the product means that the product is classed as Electrical or Electronic Equipment and should not be disposed with other household or commercial waste at the end of its working life.

The Waste of Electrical and Electronic Equipment (WEEE) Directive (2002/96/EC) has been put in place to recycle products using best available recovery and recycling techniques to minimise the impact on the environment, treat any hazardous substances and avoid the increasing landfill.

Product disposal instructions for residential users
When you have no further use for it, please remove any batteries and dispose of them and the product as per your local authority's recycling processes. For more information please contact your local authority or the retailer where the product was purchased.

Product disposal instructions for business users
Business users should contact their suppliers and check the terms and conditions of the purchase contract and ensure that this product is not mixed with other commercial waste for disposal.

Warning

This equipment is not designed for making emergency telephone calls when the power fails. Alternative arrangements should be made for access to emergency services.

R&TTE Directive & Declaration of Conformity

This product is intended for use within the UK for connection to the public telephone network and compatible switchboards.

This equipment complies with the essential requirements for the Radio Equipment and Telecommunications Terminal Equipment Directive (1999/5/EC).

For a copy of the Declaration of Conformity please refer to www.bt.com/producthelp

Your phone

Handset

Indicates new text messages.
Range indicator: On=in range. Flashing=out of range or not registered to base.

BT Opens BT Services menu.

Redial Press to open and scroll through Redial list. In talk mode adjusts earpiece volume. Scroll up.

Left soft key Press to access names in the phonebook. Select options on screen. Go back to previous menu level and clear digits and characters.

Call Make/receive a call. In talk mode, press to switch handsfree on/off.

1 Use to enter a space when entering text.

***d** Press and hold to switch handset ringer on/off. When entering text, press to switch between upper and lower case letters.

R Recall for use with Switchboard/PBX and BT Calling Features.

Intercom Use to make internal calls (where more than one handset is registered).

Indicates new missed calls. To remove the icon you need to view missed calls. See the Caller Display section opposite.

Alarm set.

Handset ringer off.

The keypad is locked.

Battery status indicator. (scrolls to indicate charging)

Headset socket (on side of handset) Headset not included. See full user guide online at www.bt.com/producthelp for further details and where to obtain a suitable headset.

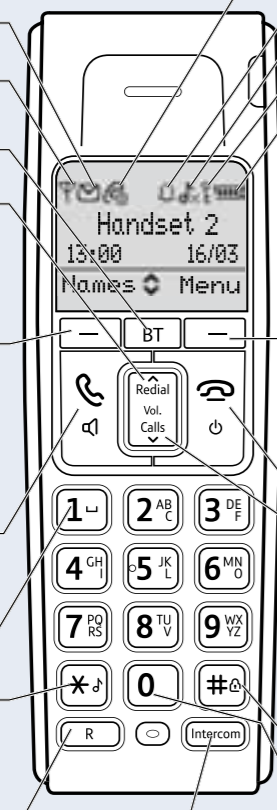
Right soft key Press to enter menu. Press to select the option displayed on the screen.

Call End a call. Press and hold to switch handset off/on. In menu mode, press to return to standby.

Calls Opens Calls list. In talk mode, adjusts earpiece volume. Scroll down.

Press and hold to lock/unlock the keypad.

0 Press and hold to enter a Pause in a phonebook entry. Use to enter punctuation marks when entering text.



Navigating the menus

Your BT Diverse 7100 Plus has an easy to use menu system. Each menu has a list of options, which you can see on the menu map below.

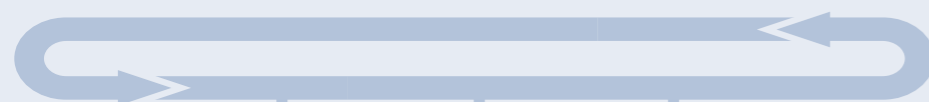
When the handset is switched on and in standby:

Press the right soft key **Menu** to open the main menu.

Then use the **Redial** or **Calls** buttons to scroll through the available options.

Press the right soft key **OK** to select a menu option or the left soft key **Back** to return to the previous screen.

To exit a menu and return to standby, press **Power**.



Text	Sound	Settings
Write Message	Ringer	Date & Time
Inbox	Tones	Alarm
Outbox		Display
Draftbox		HS (Handset) Settings
Template		BS (Base) Settings
Settings		

Some menus are accessed by pressing the relevant feature button, for example **Calls** for the calls list, **Redial** for the redial list, **BT** for BT Services and the left soft key **Names** for the phonebook.

3 Go!

If you have registered to a base in the BT Diverse 7000 Plus range then all the following features are available. If you have registered to another make/type of handset it is possible that some features, e.g. Caller Display will not work correctly.

Set time and date

Providing you have subscribed to your network's Caller Display service the date and time is set automatically when you receive your first call. To set the date and time manually follow the procedure below:

Press the right soft key **Menu** and scroll **Redial** to **Settings**, press the right soft key **OK**.

Date & Time is highlighted, press **OK**. **Time Format** is highlighted, press **OK**.

Press **Redial** or **Calls** to choose how you want the clock displayed, either 24 Hour or 12 Hour and press **OK**.

Press **Calls** to **Date Format** and press **OK**. Scroll **Redial** or **Calls** to choose DD/MM/YYYY or MM/DD/YYYY and press **OK**.

Press **Calls** to **Enter Time** and press **OK**. Enter the time using the keypad in 24 hour mode only (e.g. 17:30 for 5.30pm) and press **OK**.

Press **Calls** to **Enter Date** and press **OK**. Enter the date, e.g. 09/04/2011 (displayed as 09/04/2011) for 9 April 2011. Press **OK**.

Making calls

Press **Call** then dial the phone number. Press **Call** to end the call.

Answering calls

If you have subscribed to Caller Display, the caller's details will be displayed before you answer (see the full BT Diverse 7110 Plus user guide online at www.bt.com/producthelp for details).

Lift the handset from the charger to answer incoming calls.

If the handset is **not** on the charger, press **Call**.

Handsfree

Press **Call** during a call to switch the call to loudspeaker.

Secrecy

Press the left soft key **Secrecy** during a call to activate secrecy mode.

Press the left soft key **Secrecy** again to return to your caller.

Redial

Press **Redial**, scroll **Redial** or **Calls** to choose the number you want. Press **Call** to redial the number.

Phonebook

Storing new directory entries manually (up to 100)

Press **Names**. **New Entry** is highlighted, press **OK**.

Enter the name then press **OK**. You may need to press the same button a few times until the letter you want is displayed. For example, press **2** once for **A**, or twice for **B**.

Number is displayed. Enter the number and press **OK**.

GROUP is displayed and the group ringtone melody is played (you cannot change the ringtone at this stage). To add the entry to a call group, scroll **Redial** or **Calls** to select a group and press **OK**. Display shows **Saved** (if you don't want to use this feature simply select **No Group** for all entries).

For further information on call groups or to select call group ringtones, please refer to the full BT Diverse 7110 Plus user guide online at www.bt.com/producthelp

Dialling a directory entry

Press **Names**, scroll **Redial** or **Calls** to the entry you want. Press **Call** to dial the number.

Copy entire phonebook to another handset registered to a Diverse 7000 Plus base

Press **Names**. The first entry is displayed.

Press **Options** and scroll **Calls** to **COPY ALL** and press **OK**.

Press **Redial** or **Calls** to select the handset you want to copy all entries to and press **OK**.

At the receiving handset the display will show **Accept entries**.

Press **Yes** to confirm or **No** to cancel. When successful the display shows **Finished**.

Caller Display and the Calls list

You must subscribe to a Caller Display service for this feature to work. Your network provider may charge you for this service.

View and dial from the Calls list

Press **Calls**, the most recent entry in the list is displayed. Press **Redial** or **Calls** to scroll through the list.

Press **Options**. **Details** is highlighted, press **OK**. The call details will be displayed.

Press **Call** to dial a displayed entry.

BT Services button

If you are not connected to the BT network some of these services may not be available. Please contact your network provider for more information on network services. You may be charged for the use of these services.

The BT button **BT** provides quick access to a range of useful pre-stored numbers and further BT Calling Features. You can access the following services: BT Diverse Helpline, BT Directory Enquiries, Call Divert on/off/check and Call Waiting on/off/check.

Press **BT**. **Helpdesk** is highlighted. You can now scroll **Redial** or **Calls** through the options available.

When the service you require is displayed, press **Call** to call and follow any announcements.

Text messaging

Before sending and receiving text messages you need to register to the text messaging service and subscribe to Caller Display. You will be automatically registered to the text message service when you send your first text. See the full BT Diverse 7110 Plus user guide online at www.bt.com/producthelp for details.

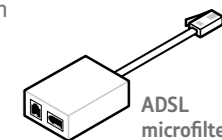
Compatible with the BT Diverse Repeater

Please see the full user guide online at www.bt.com/producthelp

Help

Most problems can be fixed with a few simple checks.

Problem	Solution
No dial tone	Only use the cable and batteries supplied. Make sure the power adaptor cable is plugged in correctly.
Poor speech quality	Make sure the product is not located too close to other electrical appliances. This can also help improve the handset range from the base.
Battery icon not full/handset dead	Make sure you charge the batteries for 24 hours before use to ensure maximum battery performance.
Using broadband on the same phone line?	Make sure you plug the base station telephone cable into the wall socket via an ADSL microfilter (not supplied), otherwise you may have problems with this product and your broadband service.
What is the BT Diverse 7000 Plus range base default PIN?	Base default PIN = 0000



Find out more

- New Frequently Asked Questions available at www.bt.com/producthelp
- If you need more detailed instructions, please refer to the BT Diverse 7110 Plus full user guide which can be downloaded from www.bt.com/producthelp
- If you cannot find the answer to your problem in the full online user guide, then please call the free Helpline on 0800 218 2182*. Our dedicated advisors are more likely to be able to help you than the retailer where you made your purchase.
- This document is also available in other formats, such as Large print, Braille and Audio CD. If you would like a copy, please call 0800 218 2182*.